



TEAMWEAR

STOCK 2014



canterbury



**THE THRILL OF VICTORY
THE PAIN OF DEFEAT
THE BANTER AFTER THE GAME**



TEAMWEAR

In teams up and down every country, in every corner of the world, there is a shared passion and love of your chosen sport that inspires Canterbury to constantly challenge sporting boundaries. We provide you with Teamwear that can stand up to the toughest of extremes, to help give you and your team the winning edge.

OUR HISTORY

Established in 1904, Canterbury has built a reputation for providing the world's toughest activewear, constantly challenging sporting boundaries to pursue the latest technological advancements both on-and off-the-field. A tough and uncompromising approach to manufacturing has seen Canterbury produce uniforms for the New Zealand Army throughout World War 1 and kit out the All Blacks for over 75 years. Backed by a century of rigorous on-field testing, Canterbury now prides itself on bringing you quality and innovative designs to kit out all of your teams needs.



SHOWERPROOF



NYLON RIPSTOP FABRIC



RIBBED CUFFS & COLLAR



MERCURY TCR

Canterbury's striking Mercury TCR training range introduces new fabric technologies featuring moisture-wicking, improved performance fit and showerproof properties. Canterbury's tradition of producing ground-breaking technical sports apparel is defined in the new Mercury TCR Training range, providing the perfect requirements for all training scenarios.

Featured: Mercury TCR Contact Top, page 20

SIZING

STANDARD SIZES

		XS	S	M	L	XL	2XL	3XL	4XL
CHEST	inch	33"	36"	39"	42.5"	46"	49"	52"	55"
	cm	84	92	100	108	116	124	132	140
WAIST	inch	27"	30"	33"	36"	39"	42.5"	46"	49"
	cm	68	76	84	92	100	108	116	124

JUNIOR SIZES

		4	6	8	10	12	14	SB	MB	LB
CHEST	inch	23"	25"	27"	29"	31"	35-36"	23-27"	27-29"	29-31"
	cm	58	63.5	68	73	78.5	88-92	63.5-68	68-73	73-78.5
WAIST	inch	22"	23"	24"	26"	27"	29"	22-24"	24-26"	26-27"
	cm	56	58	61	65	69	74	56-61	61-65	65-69

WOMENS SIZES

		XXS/6	XS/8	S/10	M/12	L/14	XL/16	2XL/18
CHEST	inch	30"	32"	34"	36"	38"	40"	42"
	cm	77	82	87	92	97	102	107
WAIST	inch	22"	24"	26"	28"	30"	32"	34"
	cm	57	62	67	72	77	82	87
HIPS	inch	33"	35"	37"	39"	41"	43"	45"
	cm	85	90	95	100	105	110	115

SOCK SIZES

		XS	S	M	L	XL
UK		11.1	2-5	6-10	11-13	14-16
EURO		29-33	34.5-38	39.5-44.5	45.5-49	50-51
US		11.5-1.5	2.5-5.5	6.5-10.5	11.5-13.5	14.5-16.5

See individual products for variations in sock sizing

CONTENTS

- 06** RUGBY
- 08** SOCKS
- 10** CRICKET
- 12** CLASSICS
- 20** MERCURY TCR
- 22** BASELAYER
- 26** BAGS & ACCESSORIES
- 30** TECHNICAL INFO



DESIGN YOUR OWN KIT

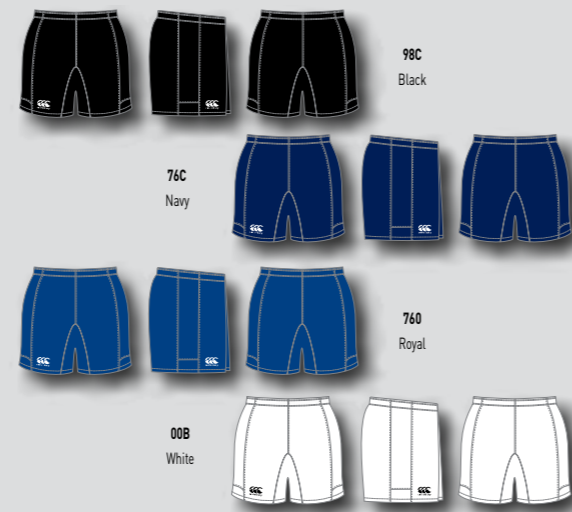
To produce your ultimate team kit with all the hidden extras, the Made To Order range is just what you need. Utilising technology from our latest professional rugby jerseys as well as wicking properties from our cutting-edge BaseLayer garments, you will not be let down by the variety of fabrics, fits and designs.

Whatever your colour, whatever your logo, whatever your sport. . . we have the kit for you and your team.

To design your own kit online or find out more information about Canterbury Teamwear, please visit our website www.ccteam.com



ADVANTAGE SHORT



- MENS: E52 271 SIZES: 28-44**
- 100% Polyester Twill, 215gsm (main body)
82% Nylon/18% Spandex tricot (gusset)
 - Stretch star gusset for comfort and maximum manoeuvrability
 - Nonslip elasticated waist and internal drawcord
 - Internal fob pocket
 - CCC logo heat applied on right leg

PROFESSIONAL SHORT



- 100% Cotton Drill Short, 285gsm MENS: E52 913 SIZES: 24-46**
100% Polyester, 230gsm MENS: E52 2378 SIZES: 24-46
- Elasticated waist with internal drawcord
 - Welt seams, side pockets taped inside
 - CCC logo embroidery on right leg

CHALLENGE JERSEY



- MENS: B97 5774 SIZES: S M L XL 2XL 3XL**
JUNIOR: B87 5774 SIZES: 6-14
- 100% Polyester, 300gsm
 - Slim Fit Jersey with Loop 21 neckline
 - Piece dyed
 - CCC logo embroidery on right chest

CHALLENGE HOOP JERSEY



- MENS: B97 5775 SIZES: S M L XL 2XL 3XL**
JUNIOR: B87 5775 SIZES: 6-14
- 100% Polyester, 300gsm
 - Slim Fit Jersey with Loop 21 neckline
 - Piece dye with sublimated hoop panel
 - CCC logo embroidery on right chest



PLAYING SOCK



020 White 090 Black 792 Navy 098 Red

STYLE CODE: T23 947
 SIZES: XS (11-1), S (2-5), M (6-10), L (11-13), XL (14-16 Kingsize)
 ■ 100% Polyamide
 ■ Hard wearing with a comfortable cushioned foot

PLAYING CAP SOCK



090 Black / White 792 Navy / White 995 Red / Black

STYLE CODE: T23 948
 SIZES: XS (11-1), S (2-5), M (6-10), L (11-13), XL (14-16 Kingsize)
 ■ 100% Polyamide
 ■ Hard wearing with a comfortable cushioned foot
 ■ Contrast turnover

HOOPED PLAYING SOCK



989 Black / White 769 Navy / White 409 Red / White 666 Forest / White

STYLE CODE: T23 949
 SIZES: XS (11-1), S (2-5), M (6-10), L (11-13), XL (14-16 Kingsize)
 ■ 100% Polyamide
 ■ Hard wearing with a comfortable cushioned foot

PERFORMANCE SOCK

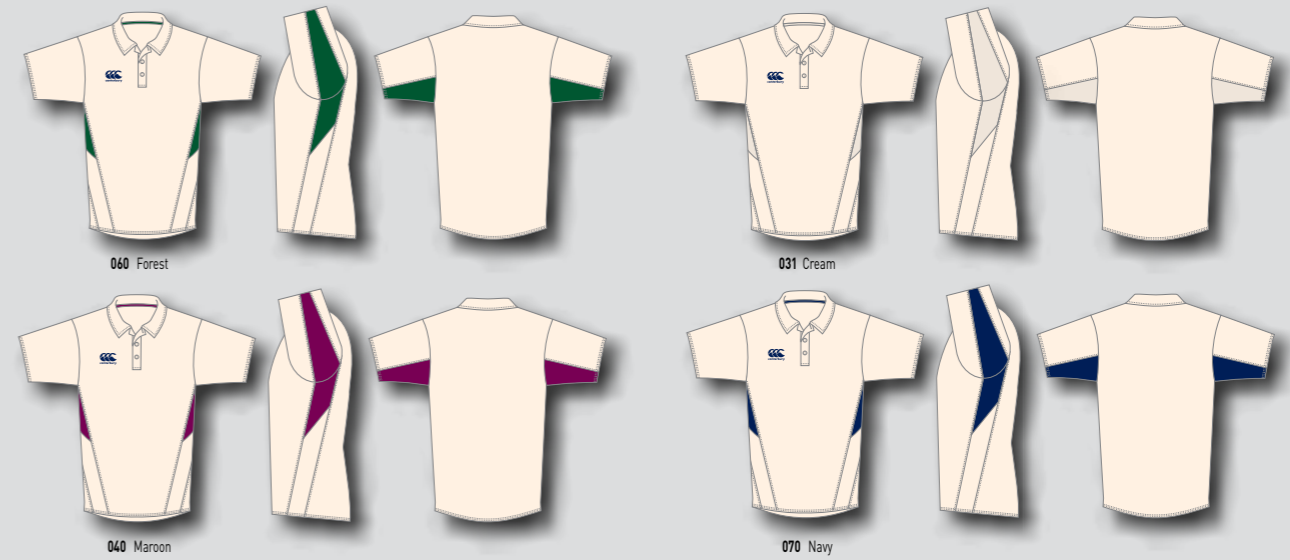


989 Black 769 Navy 666 Forest 409 Red

STYLE CODE: E23 557
 SIZES: S (12-3), M (4-7), L (7-11), XL (12+)
 ■ 100% Polyamide
 ■ Mesh ventilation on bridge of foot & calf for improved comfort
 ■ Ankle support & arch support bridge for better performance
 ■ Real heel for best fit



CLASSIC CRICKET SHIRT



MENS: E53 3306 SIZES: XS S M L XL 2XL 3XL
 JUNIOR: E73 3306 SIZES: SB MB LB

- 100% Polyester, 130gm with wicking finish
- Contrast panel
- Self fabric collar with placket neck
- CCC logo heat applied on right chest

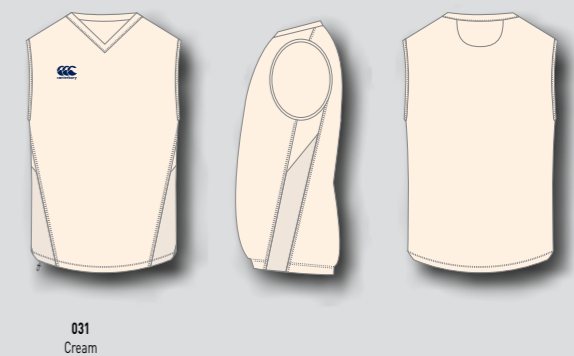
CLASSIC CRICKET TROUSER



MENS: E51 2151 SIZES: XS S M L XL 2XL 3XL
 JUNIOR: E71 2151 SIZES: SB MB LB

- 100% Polyester Pique, 250gsm
- CCC logo heat applied on right leg

CLASSIC CRICKET OVERSHIRT



MENS: E55 2713 SIZES: XS S M L XL 2XL 3XL
 JUNIOR: E75 2713 SIZES: SB MB LB

- 100% Polyester Bonded Fleece
- Self fabric collar
- CCC logo heat applied on right chest



WAIMAK POLO



MENS: E53 2768 SIZES: S M L XL 2XL 3XL
 WOMENS: E63 2768 SIZES: 8-18 Not available in 922
 JUNIOR: E73 2768 SIZES: 6-14

- 65% Polyester 35% Cotton Pique 250gsm
- Knit rib and Cuffs, Button placket neck
- Side seam vents with contrast herringbone tape
- Contrast triple bar tack signature at hem
- CCC logo embroidered on right chest

LAPTOP HOODY



MENS: T55 2315 SIZES: S M L XL 2XL 3XL
 WOMENS: T65 2315 SIZES: 8-18
 JUNIOR: T75 2315 SIZES: 6-14

- 60% Cotton 40% Polyester, 340gsm
- Front Kangaroo style pocket
- Ribbed Cuffs and Hem
- CCC logo embroidered on right chest
- No drawcord on junior style

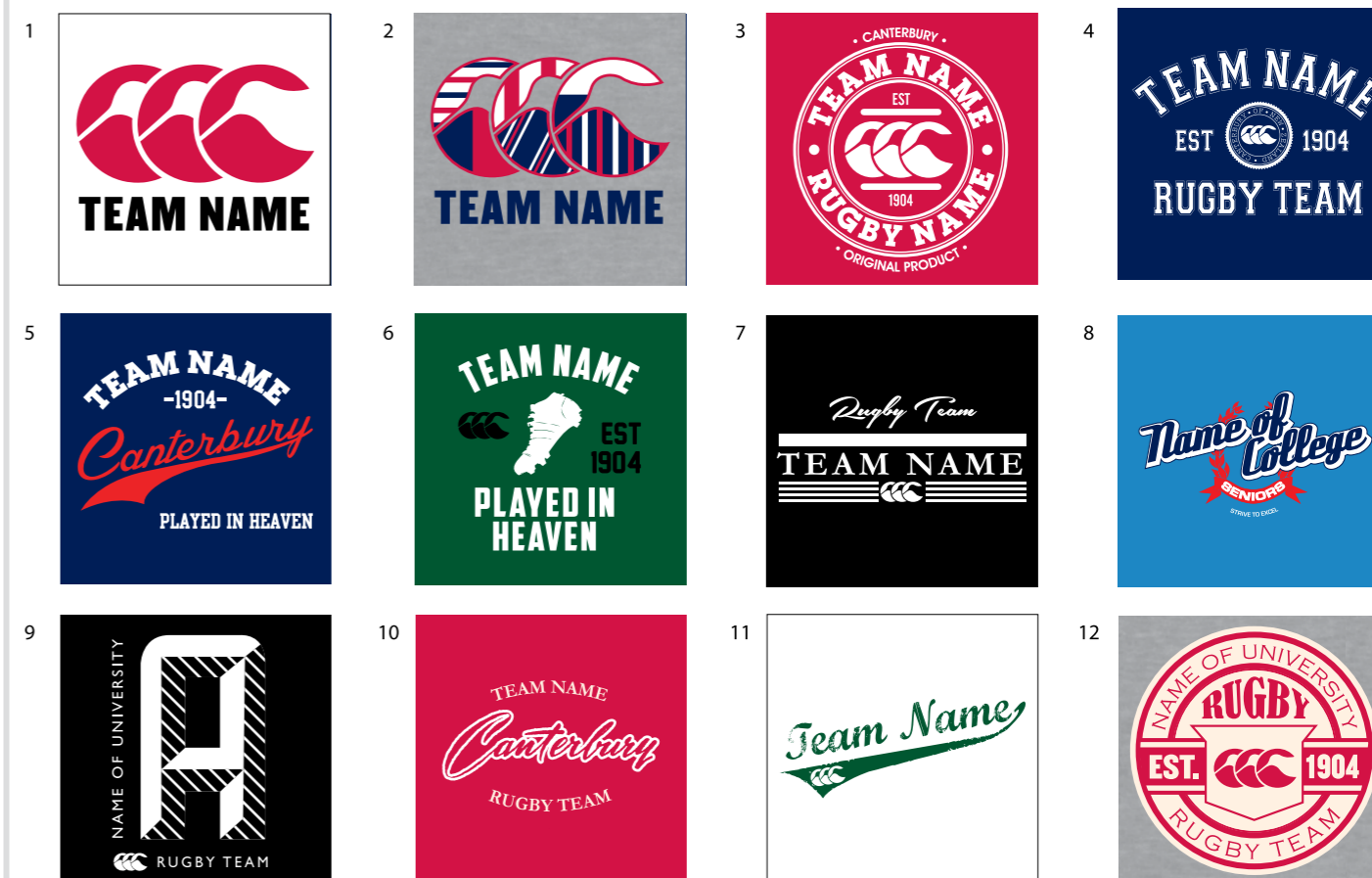
SHORT SLEEVE PLAIN T-SHIRT



MENS: T54 5166 SIZES: S M L XL 2XL 3XL
 WOMENS: T64 5166 SIZES: 8-16 Not available in 001 / 720 / 666 / 468
 JUNIOR: T74 5166 SIZES: 6-14 Not available in 720 / 666 / 468

- 180gms Basic Cotton Short Sleeve Tee
- Allows addition & positioning of CCC / Sponsors logo by request
- Self colour CCC embroidered logo on left sleeve

PRINT OPTIONS





SKORT



WOMENS: E67 136 SIZES: 6-18
 JUNIOR: E77 136 SIZES: 6-14

- 80% Nylon, 20% Elastane, 205gsm
- Lightweight and flexible
- CCC logo print on left leg

LINED STADIUM PANT



MENS: E51 463 SIZES: XS S M L XL 2XL 3XL
 JUNIOR: E71 463 SIZES: 6-14

- 100% Polyester TZ Tactel Pant, 110gsm
- Cotton Liner with taffeta lower leg
- Elasticated waist with internal drawcord, elasticated hem
- Full length zips with side pockets
- CCC Logo and Canterbury of New Zealand Embroidery on right leg

OPEN HEM STADIUM PANT



MENS: E51 182 SIZES: XS S M L XL 2XL 3XL
 WOMENS: E61 333 SIZES: 8-18
 JUNIOR: E71 182 SIZES: 6-14

- 100% Polyester TZ Tactel Pant, 110gsm
- Cotton liner with taffeta lower leg, elasticated waist with internal drawcord, open hem with velcro cuff adjuster
- Full length zips with side pockets
- CCC logo and Canterbury of New Zealand embroidery on right leg

TECH SHORT



MENS: E52 2278 SIZES: S M L XL 2XL 3XL
 JUNIOR: E72 2278 SIZES: 6-14

- 100% Polyester
- Lightweight Quick Dry Training short
- Elasticated waist with drawcord
- CCC logo embroidery on right leg
- Side pockets

COMBINATION PANT



MENS: E51 1546 SIZES: S M L XL 2XL 3XL
 JUNIOR: E71 1546 SIZES: 6-14

- 60% Cotton / 40% Polyester brushed back fleece sweat pant, 340gms
- Elasticated waist with drawcord
- Side pockets
- Open hem
- CCC logo embroidered on right leg

CLASSIC TRACK PANT



MENS: T51 2135 SIZES: S M L XL 2XL 3XL
 JUNIOR: T71 2135 SIZES: 6-14

- 100% Polyester TZ Tactel, 110gsm
- Mesh liner with taffeta lower leg, elasticated waist with internal drawcord, open hem
- Contrast piping detail
- Side pockets
- CCC logo embroidery on right leg



CLASSIC DRY SHORT SLEEVE T-SHIRT



MENS: E54 5480 SIZES: S M L XL 2XL 3XL
 WOMENS: E64 5480 SIZES: 8-16
 JUNIOR: E74 5480 SIZES: 6-14

- 100% Polyester, 150gsm
- Quick drying Tee with stitch detail
- CCC logo printed on right chest

CLASSIC DRY POLO



MENS: E53 3147 SIZES: S M L XL 2XL 3XL
 WOMENS: E63 3147 SIZES: 8-16
 JUNIOR: E73 3147 SIZES: 6-14

- 100% Polyester, cut & sew, 150gsm
- Quick drying Tee with stitch detail
- CCC logo printed on right chest

CLASSIC FLEECE



MENS: E58 2996 SIZES: S M L XL 2XL 3XL 4XL
 WOMENS: E68 2996 SIZES: 8-16
 JUNIOR: E78 2996 SIZES: 6-14

- 100% Polyester, 260gsm
- Cut & Sew Microfleece with contrast piping detail
- Lycra binding on cuffs and hem
- Drawcord in hem
- CCC Embroidered logo on right chest

CLASSIC CONTACT TOP



MENS: E58 2994 SIZES: S M L XL 2XL 3XL
 JUNIOR: E78 2994 SIZES: 6-14

- 100% Nylon Ripstop Dobby outer fabric, 600mm PU (Water resistant) with 100% Polyester mesh lining
- Showerproof
- Contrast piping detail
- No bungee cord (safety feature)
- CCC Embroidered logo on right chest

CLASSIC TRACK JACKET



MENS: E58 2993 SIZES: S M L XL 2XL 3XL
 JUNIOR: E78 2993 SIZES: 6-14

- 100% Polyester TZ Tactel, 100% Polyester mesh lining, 100% Nylon taffeta lower sleeve
- Contrast piping detail
- Side zip pockets
- Elasticated cuffs & hem
- CCC embroidered logo on right chest



CLASSIC 1/4 ZIP RAIN JACKET



MENS: E58 2995 SIZES: S M L XL 2XL 3XL
JUNIOR: E78 2995 SIZES: 6-14

- 100% Nylon Ripstop Dobby outer fabric, 600mm PU (water resistant), 100% Polyester mesh lining
- Showerproof rain jacket with hood and side zip pockets
- Cut and Sew with contrast piping detail
- Adjustable bungee cord to hood and lower hem
- CCC Embroidered logo on right chest

CLASSIC FULL ZIP RAIN JACKET



WOMENS: E68 2995 SIZES: 8-16

- 100% Nylon Ripstop Dobby outer fabric, 600mm PU (water resistant), 100% Polyester mesh lining
- Showerproof rain jacket with hood and side zip pockets
- Cut and Sew with contrast piping detail
- Adjustable bungee cord to hood and lower hem
- CCC Embroidered logo on right chest

STADIUM JACKET



MENS: E58 2544 SIZES: S M L XL 2XL 3XL 4XL

- 100% Nylon Oxford, 600mm showerproof fabric, 100% Polyester padded liner
- Padded "STADIUM" jacket with concealed hood in collar
- Microfleece liner in collar for comfort
- Full length centre front zip with storm flap and stud fasteners
- Side zip pockets and internal wallet pocket
- Contrast piping detail
- Adjustable bungee cord to hood and lower hem
- CCC logo embroidery on right chest
- CCC logo silhouette embroidery on sleeve

BEANIE



MENS: E30 2133 SIZES: ONE SIZE

- 100% Knitted Acrylic Beanie
- CCC logo embroidery centered

PRO SUBS COAT



MENS: E58 618 SIZES: S M L XL 2XL 3XL

- 100% Polyester Ripstop Nylon with padded quilt liner, 600mm shower proof
- 3/4 length waterproof padded subs jacket with hood
- Ideal for bench use and side line coaching
- Full length centre front zip
- Side zip pockets
- Velcro cuff adjusters
- CCC logo embroidery on right chest & print centre back

CAP



MENS: E30 2438 SIZES: ONE SIZE

- 100% Cotton Drill Cap
- Back tab adjuster
- CCC logo embroidery on left side



SHOWERPROOF



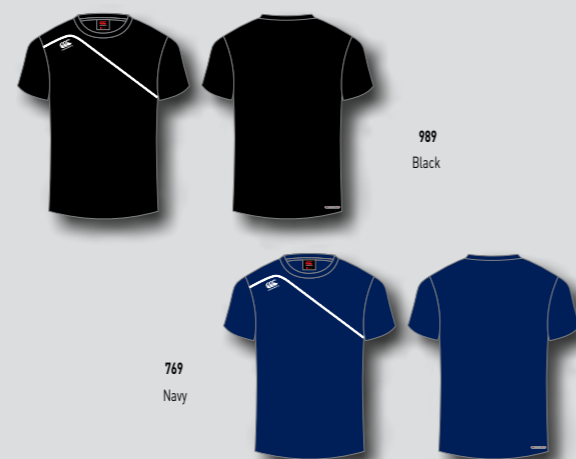
NYLON RIPSTOP FABRIC



RIBBED CUFFS & COLLAR



MERCURY TCR T-SHIRT



MENS: E54 5458 SIZES: S M L XL 2XL 3XL 4XL

- 100% Polyester pique
- Cut & sew construction
- Flatlock seams for improved comfort
- CCC printed logo

MERCURY TCR HOODY



MENS: E55 2483 SIZES: S M L XL 2XL 3XL 4XL

- 60% Cotton, 40% Polyester 350gsm
- Side zip pockets
- CCC Embroidered Logo
- Bungee cord with toggle on hood

MERCURY TCR CONTACT TOP



MENS: E58 2964 SIZES: S M L XL 2XL 3XL 4XL

- 100% Nylon Ripstop
- 100% Polyester Mesh lining
- Showerproof (600mm PU)
- Elasticated cuffs and ribbed collar
- CCC printed logo

MERCURY TCR MICROFLEECE



MENS: E55 2480 SIZES: S M L XL 2XL 3XL 4XL

- 100% Polyester Microfleece
- Brushed anti-pill fabric
- Side zip pockets
- Elasticated cuffs
- Embroidered CCC logo

MERCURY TCR FULL ZIP SHOWER JACKET



MENS: E58 2961 SIZES: S M L XL 2XL 3XL 4XL

- 100% Nylon Ripstop
- 100% Polyester Mesh lining with taffeta sleeve lining
- Showerproof (600mm PU)
- Full zip with side zip pockets
- Bungee cord and toggle at hem and hood
- CCC printed logo

MERCURY TCR CONTACT PANT



MENS: E51 1983 SIZES: S M L XL 2XL 3XL 4XL

- 100% Nylon Ripstop
- 100% Polyester Mesh lining with nylon taffeta lower leg lining
- Showerproof (600mm PU)
- Zip opening at lower leg with storm flap
- CCC printed logo

BASELAYER COLD



WICKS MOISTURE FROM SKIN



BOOSTS EVAPORATION OF SWEAT



PROACTIVE INSULATION FOR COLD ENVIRONMENTS



ANTI CHILL FACTOR MAINTAINS CONSTANT BODY TEMPERATURE



ANTI ODOUR AGENTS



ESSENTIALS COLD LONG SLEEVE

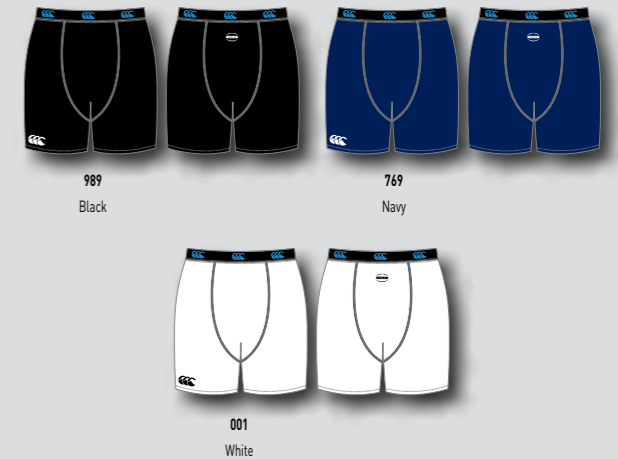


MENS: E54 4110 SIZES: XS S M L XL 2XL 3XL

JUNIOR: E74 4110 SIZES: JSM JMD JLG

- 65% Nylon / 21% Polyester / 14% Lycra
- Moisture management / Anti bacterial finish
- Flat seaming on armhole to prevent chafing
- CCC logo centre front below crew neck & CCC logo on right sleeve
- Cold BaseLayer logo on outside centre back neck with size details, for comfort

COLD SHORT



MENS: E52 1633 SIZES: XS S M L XL 2XL 3XL

JUNIOR: E72 1633 SIZES: JSM JMD JLG (not available in 769 & 001)

- 65% Nylon / 21% Polyester / 14% Lycra
- Moisture management / Anti bacterial finish
- Flat seaming for improved fit
- CCC logo on the front right leg
- Cold BaseLayer logo on outside back waist with size details, for comfort
- CCC jacquard elastic waist

COLD LEGGING



MENS: E51 1445 SIZES: XS S M L XL 2XL 3XL

JUNIOR: E71 1445 SIZES: JSM JMD JLG (not available in 001)

- 65% Nylon / 21% Polyester / 14% Lycra
- Moisture management / Anti bacterial finish
- Flat seaming for improved fit
- CCC logo on the front and CCC logo on rear right leg
- Cold BaseLayer logo on outside back waist with size details, for comfort
- CCC jacquard elastic waist

WOMENS ESSENTIAL COLD LONG SLEEVE



WOMENS: E64 4110 SIZES: XS S M L XL 2XL

- 65% Nylon / 21% Polyester / 14% Lycra
- Moisture management / Anti bacterial finish
- Flat seaming on armhole to prevent chafing
- CCC logo centre front below crew neck & CCC logo on right sleeve
- Cold BaseLayer logo on outside centre back neck, for comfort



CCC CLUB BOOTBAG



769 Navy

989 Black

CODE: E20 667 SIZE: ONE SIZE

- 36 x 18 x 13cm (H x W x D)
- 600D Polyester PU / Ripstop polyester
- Zipped entry

CLUB II BACKPACK



769 Navy

989 Black

CODE: E20 905

- 47 x 32 x 22cm (H x W x D)
- 600D Polyester PU / Ripstop polyester
- Top entry zip opening to main compartment
- Zipped front pocket
- Mesh side pockets
- Adjustable padded shoulder straps
- Internal organiser

CLUB II MEDIUM SPORTSBAG



769 Navy

989 Black

CODE: E20 906

- 31 x 64 x 28cm (H x W x D)
- 600D Polyester PU / Ripstop polyester
- Top entry zip opening to main compartment
- Zipped side pockets
- Haul handle

CLUB II LARGE HOPPER



769 Navy

989 Black

CODE: E20 907

- 43 x 64 x 43cm (H x W x D)
- 600D Polyester PU / Ripstop polyester
- Top entry zip opening to main compartment
- Zipped side pockets
- Haul handle
- Hard base

CLUB KIT BAG



989 Black

CODE: E20 289

- 38 x 95 x 34cm (H x W x D)
- 600D Polyester PU / Ripstop polyester
- Top entry zip opening to main compartment
- Haul handle

CCC TRAVEL WHEELIE BAG



989 Black

CODE: E20 475

- Perimeter double zips
- Side grab handles
- Heavy duty back panel
- Durable wheels
- Extendable top handle



SPORTS WATERBOTTLE



CODE: E21 918

SIZE: ONE SIZE

- CCC water bottle
- Clear exterior with printed CCC logo to front
- Contrast coloured non-drip valve
- Shaping to middle for easy grip

GOLF UMBRELLA

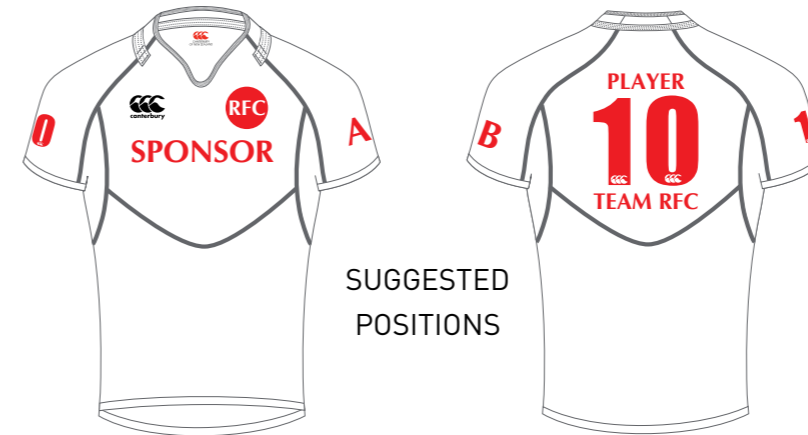


CODE: E21 485

SIZE: ONE SIZE

- Size 30" reinforced golf style umbrella
- Double skinned storm resistance
- 100% polyester canopy
- Reinforced carbon steel ribs & fibreglass shaft, plastic ferrule & cup
- Easy grip rubber handle
- Screen printed CCC Canterbury logo on alternative panels

A full printing and embroidery service is available for your crest, logo and player personalisation. Please see below or speak to your Canterbury sales representative for more information.



SUGGESTED POSITIONS

Solid One colour - Sizes 5cm, 20cm, 25cm
No CCC on 5cm numbers



THERMO NUMBER OPTIONS

20cm numbers are recommended for the back of slim fit jerseys, 25cm are recommended for the back of standard fit jerseys, 5cm numbers are recommended for shorts, track pants or chest and sleeve positions. CCC is cut out so fabric behind shows through.

Names can be added across the back shoulders or as initials on the sleeve/chest. Thermo lettering is 5cm in height and available in black, navy, scarlet or white. Screenprinted names are available in requested shades, however thermo is the recommended option.

Sublimated garments - numbers and names can be sublimated into any sublimated garment being made to-order. This is at no additional cost to the garment and it is possible to request specific shades. For non standard colours please advise a Pantone (PMS) shade number. For non-standard CCC numbers please provide images of digits 0-9, for non-standard names please provide font name and file. Non-standard only available for sublimation.

EMBROIDERY

A full embroidery service is available for your crest or logo.

If the logo is already set up the electronic version (eg embroidery disc) will need to be submitted with the order, as well as a worksheet and details of colours required. Maderia thread shades must be provided, otherwise standard Canterbury colours will be used.

If the logo is not set up electronically then we will require a brand manual or high resolution logo specification sheet to set up a disc for you, ensure you explain clearly how your logo is to appear on both dark or light coloured items. The size required for the logo must also be provided. For new disc set ups an image of the disc will be forwarded to you, this will require approval before the disc will be used.

Embroideries will be sampled onto a swatch and a photograph sent electronically for approval before production is started.

PRINTING

Screenprint or thermo print services are available for your crest or sponsor logo.

Please ensure a good quality image of the logo is submitted electronically, the preferred formats are vector or high resolution eps or jpeg. Faxed paper copies, letterheads or garments are not suitable formats.

For logos with text, please provide the font name where possible. Pantone (PMS) colours must be submitted, otherwise standard Canterbury colours will be used.

Sublimated garments - crests and logos can be sublimated into any sublimated garment being made-to-order. This is at no additional cost to the garment.

BADGES

We are able to apply pre-made badges to many fabrics, please ask for more details.

Personalised neck tape and woven labels are available, please ask for more details.

Please note that certain fabrics will be better suited to some application methods than others. If you are unsure of the best embellishments to use please contact your Canterbury sales representative for more information.

Please ensure that you secure permission from the appropriate party before using any logos or images, Canterbury of New Zealand Ltd can not accept any responsibility for the unauthorised use of third party logos or images. Canterbury reserve the right to refuse to apply any name or logo considered offensive or unsuitable.

HEAD OFFICE EUROPE

Canterbury of New Zealand Ltd
First Floor, Houldsworth Mill
Houldsworth Street, Stockport
Cheshire, England, SK5 6DS

Tel: +44 (0) 161 947 9933
Fax: +44 (0) 161 947 9955
www.canterbury.com

ABM Sport

Serebryakova pr.
14B, build 7
129343
Moscow, Russia

Tel: +74992582923
Mob. tel.: +79265410869
Email: abmsport.ru
http://vk.com/canterbury_russia

ITALY

c/o La Fra.Ma SAS
Franzine Serravalle 14-15/E
14100 ASTI
ITALY

Tel e fax: +39 0141 294 963
Email: info@canterburyitalia.com
www.canterburyitalia.com

IRELAND

Canterbury Ireland
Unit G2
Calmount Business Park
Ballymount Dublin 12 Ireland

Tel: 00 353 (0) 1 429 8571
Fax: 00 353 (0) 1 429 8572

DUBAI

Al Boom Marine
PO Box 30439
DUBAI
UAE

Tel: +971 4289 4858
Fax: +971 4289 4699
www.alboommarine.com

GERMANY, AUSTRIA

Canterbury of New Zealand
Rheinstrasse 15
D-66955 Pirmasens
Germany

Tel: +49 6331 - 28 62 03
Fax: +49 6331 - 28 35 50
Email: info@canterburynz.de

FRANCE

Uhl'sport France
ZI Athélia II
170 Impasse du Serpolet
13704 La Ciotat Cedex, France

Tel: +33 (0)4 42 08 80 30

SPAIN

Xspandus España SL
Avda. de los Pirineos, 7 - Nave 9A
28709 San Sebastian de los Reyes
Madrid, España

Tel: +34 91 658 6420
Fax: +34 91 653 9215
Email: teamwear@canterburyes.com
www.canterbury.es

HOLLAND (BENELUX)

Prime Sportsgear BV
Sadatweg 14, 2622 AP Delft
The Netherlands, Holland

Tel: +31 (0) 15 285 5700
Fax: +31 (0) 15 256 1476
Email: primebv@wx.nl

For more company and product information visit our website at: www.canterbury.com

TEAMWEAR

OWN YOUR GAME

